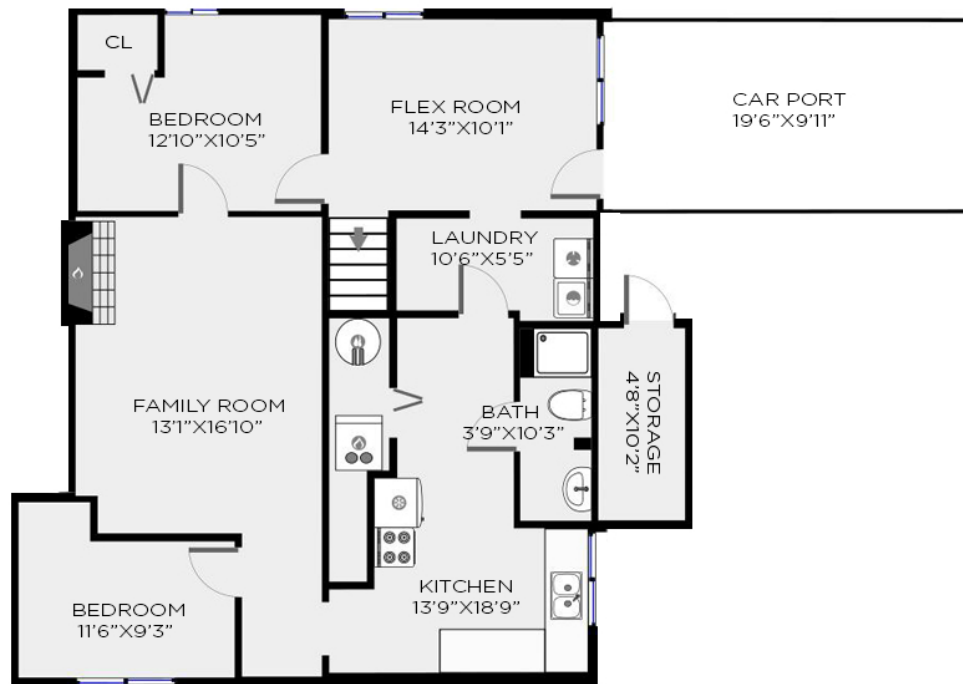
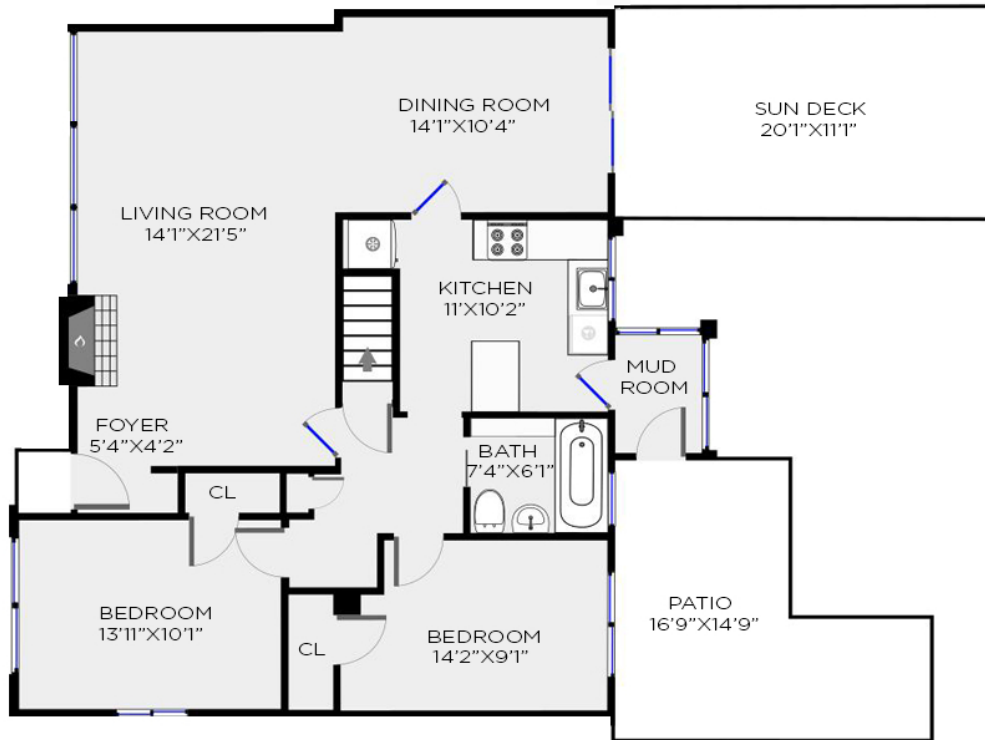


# 724 BOWLER ST. NEW WESTMINSTER

MEASURED FOR  
**BRENT WEICK**  
SOLD@BRENTWEICK.COM  
(604) 657-2660



TOTAL : 2,251 SQ FT

	AUXILIARY	
CAR PORT	194 SQ FT	STORAGE 47 SQ FT
PATIO	183 SQ FT	SUN DECK 221 SQ FT

THIS FLOORPLAN IS PROVIDED WITHOUT WARRANTY OF ANY KIND. THE CONTRACTOR DISCLAIMS ANY WARRANTY INCLUDING, WITHOUT LIMITATION, SATISFACTORY QUALITY OR ACCURACY OF DIMENSIONS. FLOOR PLAN IS FOR VISUAL MARKETING PURPOSES AND IS NOT GUARANTEED

MEASURED BY  
CMO PHOTOGRAPHY

