

11885 249 A. STREET

Maple Ridge MLS # R2433616

Detached House 3 Bed 3 Bath Built **2002** SqFt **1930** Lot SF **9311**



BRENT WEICK

604-657-2660 sold@brentweick.com

Royal LePage Wolstencroft



Wolstencroft

INDEPENDENTLY OWNED AND OPERATED

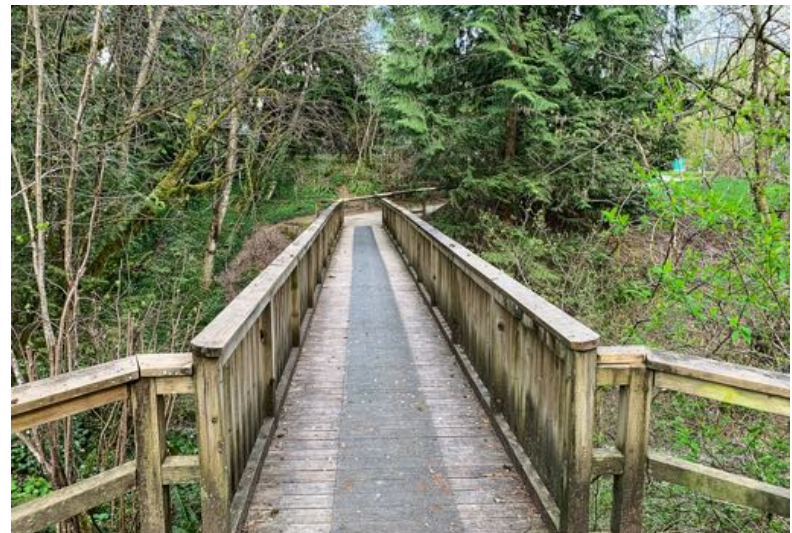
11885 249 A. STREET

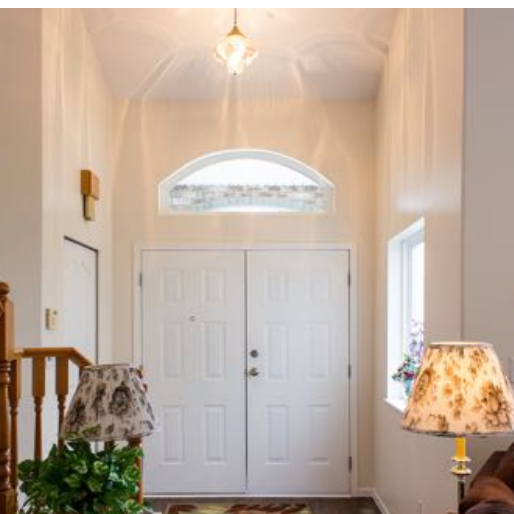
Maple Ridge MLS # R2433616

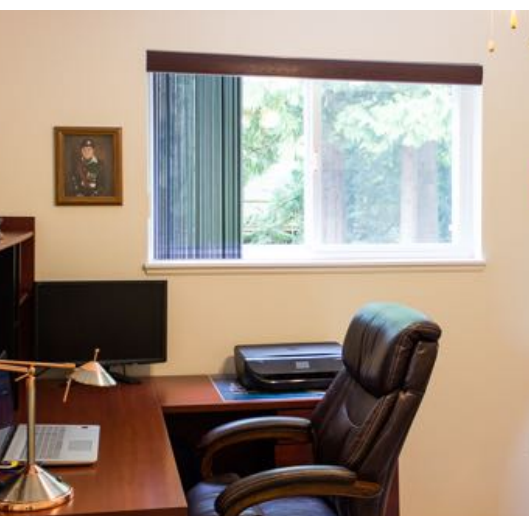
Detached House 3 Bed 3 Bath Built **2002** SqFt **1930** Lot SF **9311**

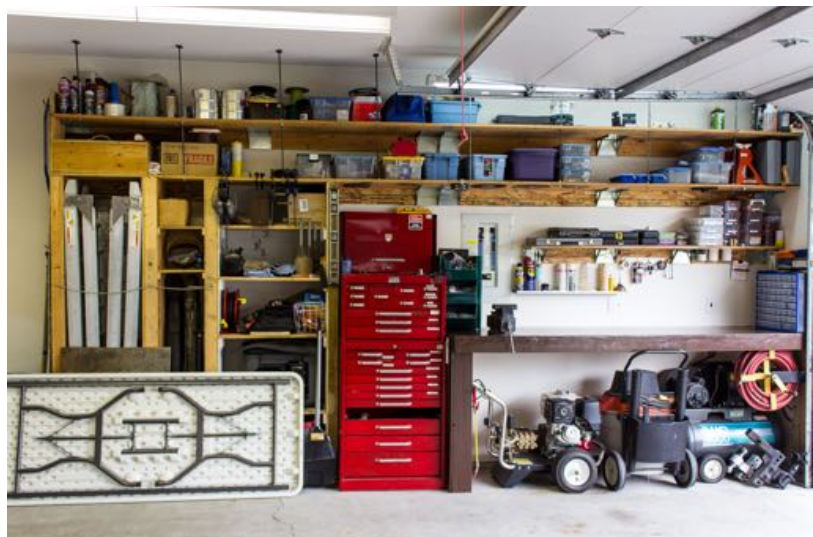


This custom built home is nestled in the safe and secluded subdivision of Websters Corners. Perfect for the outdoors type. Take a short hike, ATV in the parks, Canoe in the Lake, Camp at Golden Ears or enjoy your own wooded green belt in the back yard. Features include Covered RV Parking w/ full elec. water & sewer hookup, Oversized Garage that fits a large truck, Underground Sprinklers, Security Cams & Alarm sys, BBQ gas h/up, Hot Water Dog Wash near Oversized Patio, pre-wired for Hot Tub, and Leaf Guard Eaves Trough sys. Inside features Master on Main w/ heated B/R flrs, spacious loft upstairs, vaulted ceilings, bright open living room w/ dual burner gas f/p and more! Quiet and prestigious area close to private & public schools and amenities. Original owners Immaculate clean condition!









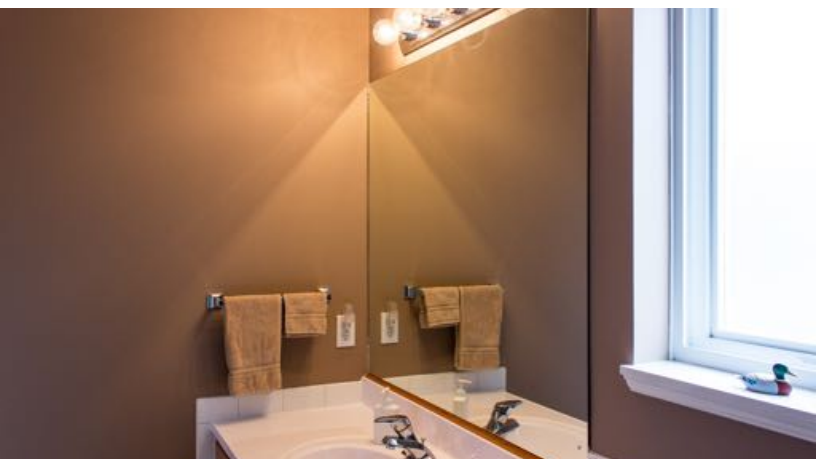
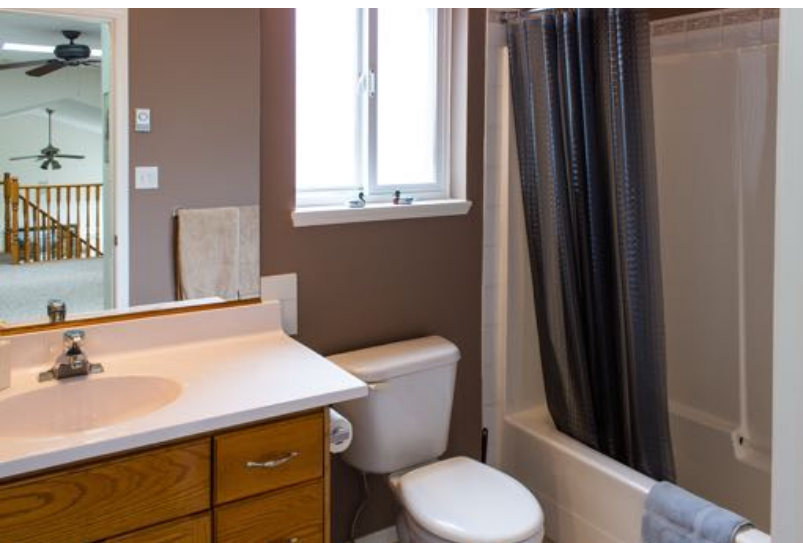
BRENT WEICK

604-657-2660 sold@brentweick.com

Royal LePage Wolstencroft

ROYAL LEPAGE

Wolstencroft
INDEPENDENTLY OWNED AND OPERATED





BRENT WEICK

604-657-2660 sold@brentweick.com

Royal LePage Wolstencroft

ROYAL LEPAGE

Wolstencroft
INDEPENDENTLY OWNED AND OPERATED